

# SBKA Exmoor Division

November/December  
2010



## DATES FOR YOUR DIARY.

**FRIDAY 12<sup>TH</sup> NOVEMBER 2010**

**EXMOOR BEEKEEPERS**

**ANNUAL GENERAL MEETING**

**To be democratic we need as many of you as possible there. The Club is YOURS so please come along, especially if you haven't been before.**

**The meeting will be followed by refreshments. Please bring a plate of nibbles to contribute to the buffet. We look forward to seeing you.**

Would you each be able to bring along just one jar of honey in appreciation of all our honorary auditor's time and effort?

===

**FRIDAY 26<sup>th</sup> NOVEMBER—Entertaining Evening with Quantock Beekeepers in the Anchor Inn at Combwich Further details available from Robert Palmer on 01278 653464 or on [www.somersetbeekeepers.org](http://www.somersetbeekeepers.org) - Quantock Division.**

===

**FRIDAY 26<sup>th</sup> NOVEMBER—Adam Vevars Regional Bee Inspector -Update on disease management + Quiz**

===

**FRIDAY DECEMBER 10<sup>th</sup> Swarm Control. David Packham, Regional Bee Inspector for East Devon**

**ALL MEETINGS ARE HELD AT 7pm in 6<sup>th</sup> FORM COMMON ROOM, WEST SOMERSET COMMUNITY COLLEGE, MINEHEAD - UNLESS OTHERWISE STATED.**

## FREE EXCHANGE AND MART

### “From an egg to an Elephant”

This section is for the use of any member to advertise anything (at the discretion of the editor) Beekeeping items will be given priority and other items will be added if there is room.

To advertise **FREE OF CHARGE**, please send request to [lorainestevens@btinternet.com](mailto:lorainestevens@btinternet.com) or ring 01398351344

Photos can be included

Shirley Cawthorne 07802 413835 would like to buy some **ducks**

**WANTED TO HIRE.** Boer Billy goat as stud for my lovely nanny. Liz Passmore 01643 821442

**Clay Pigeon Shooting.** One to one tuition or groups. Contact Phil Llewellyn (25 years experience) 01398351338

**EBDON GEESE for sale. £12.50 Tel 01398331861**

**Handmade Greetings Cards £1 each. Loraine Stevens Tel : 01398351344**



Wendy Elmsall has lots of BEE BOOKS & Couple of Bee toys suitable for Draw Prizes etc.... Plus LOTS and LOTS of other things . - [wendywoo60@googlemail.com](mailto:wendywoo60@googlemail.com) Check out my eBay site - [wendywoo21](http://wendywoo21)

**Electric wood-burner effect fire fan assisted - almost new £25.00 Mr P Langley 01643 862017 (Porlock)**

=====

## Honey Snowflakes for Christmas

- 1/2 cup butter,
- 1/2 cup brown sugar,
- 1 teaspoon baking powder
- 1/2 teaspoon ground cardamom
- 1 egg
- 1/2 cup honey
- 2 cups flour
- 1 cup whole wheat flour



In a mixing bowl, beat the butter on medium to high speed for 30 seconds. Add the brown sugar, baking powder and cardamom; beat until combined.

Beat in the egg and honey.

Beat in as much of the flours as you can with a mixer. Stir in any remaining flour with a wooden spoon.

Divide dough in half. Cover and chill for 3 hours, or until easy to handle.

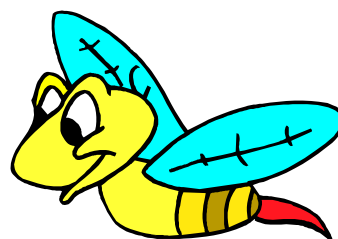
On a lightly floured surface, roll each half of dough to a 1/4-inch thickness. Using a 2 or 2 1/2-inch cookie cutter, cut dough into shapes. Place cookies 2 inches apart on ungreased cookie sheets.

Bake cookies at 375°F for 7 to 9 minutes, or until edges are firm and bottoms are lightly browned. Remove cookies and cool on rack.

Frost if desired. Makes 4 to 5 dozen cookies.

### Advice ?

A Bee's front end is sweet and kind,  
But never trust a Bee's behind...  
For it will sting if it can sit,



So always stay in front of it!

**NOW SERIOUS ADVICE**—Get those Mouse guards on as soon as possible!. Do it when the bees are flying or you may shut a pregnant mouse in! Place the guards in such a position that there will be no build up of trash behind them. Make it easy for the bees to tip out all their waste. Make sure mice cant get in round the side of the guard.

**On 8th October Keith Britton** gave a most interesting talk on how he makes and has adapted his WBC



hives. He explained that the first WBC hives were made by William Broughton Carr in 1800 and updated in 1920 to the similar ones that we use today. These days most are made of cedar because of its light weight and durability.

WBC's are double walled hives which are more suitable and attractive to be used where it is not necessary to use them for migratory beekeeping. Although they have more parts than a single walled hive they are protected against late spring frosts and their inner box is always dry.

Keith said that 20 years ago, when he prepared to start beekeeping, because of the high cost of purchasing a WBC hive he decided to make one for himself. He bought some plans and made cardboard templates so that he could make similar hives afterwards.



**LEGS** - Working from the bottom he made legs of hardwood with small rubber buffers between the legs and the ground slab. He used brass screws and copper nails throughout which, long term, have turned out to be a success. He has maintained his hives over the years by using Cuprinol on the non-bee surfaces.

**FLOOR** - His hive floors could be modified to house Varroa floors but he decided against doing so. The floors on his WBC's are sloping towards the outside at the entrance, but the brood box rests exactly horizontal, on a cross bar attached to the floor. This enables

the bees to enter the hive under this bar in a 3/8" gap.

**LIFTS** – Immediately above the floor on the outside is the “Porch”. This is a lift, similar size to the other lifts but it has an angled roof at the front which protects the entrance from snow or severe wind. It is fitted with strips to hold sliders and mouse guards. When fitting together the sides of the lifts, Keith rebated back one side and when joining he used screws, copper nails and “Unibond” glue. By doing this he found it completely unnecessary to “Dovetail” them. He used Chestnut wood for the lifts. It has been traditional in the past to paint the non bee surfaces white and if required Keith informed us that white Cuprinol can now be purchased. Nevertheless Keith's hive was treated with clear Cuprinol.

**ROOF** – Keith used hardwood for the roof. He recommended Marine ply. He said that if it is good enough to use on boats, he considered it suitable for his hive roofs. He covered his roofs with either Zinc or aluminium sheet, folded all in one over the central ridge. He told us that zinc is easier to bend. He has adapted the roof so that it extends a few inches more. This allows extra protection against the weather.

**BROOD CHAMBER** – He used Marine ½” ply and explained that the brood chamber must fit together snug. He told us that it is important to get the slots tight and then glue. He also commented that although Marine ply is expensive, it has lasted a good 20 years



and is still very much intact. He has found that his adaption of using a hardwood strip instead of a metal or plastic runner has been satisfactory.

Keith has a carbide tip saw which he uses to cut an inch or so off the bottom of the brood box. Then he adds a hardwood layer at the bottom of the box to strengthen it. He uses a soda solution to wash and a blowlamp to sterilise. To finish he showed us a little holder he made to stand an upturned jar as a "Trickle" feeder.

So far he has made 16 hives consisting of 2 brood, 3 supers, 2 crown boards, roof, floor and the corresponding lifts. He has also made 4 double nuc boxes.

In the discussion afterwards he was asked about the "Pros" and "Cons" of a WBC hive. – As follows-

**Pros** –

Double walled so more weather protection in winter

Very few problems with dead brood during late spring frosts.

Condensation is very rare.

Internal boxes are smaller so easier to lift

Beautiful to behold.

**Cons** -

More equipment to handle. (Not suitable for Migratory beekeeping)

Internal boxes are smaller so more risk of congestion, possibly leading to swarming. (May need to use a double brood).

The evening was punctuated with refreshments and happy chatter.

**If you require plans to build a WBC hive please contact [lorainestevens@btinternet.com](mailto:lorainestevens@btinternet.com)**

---

**AGONY AUNT** (For beginners)

**If you have any questions or queries re beekeeping, however trivial, please contact me and I will do my best to advise asap.**

**Email [lorainestevens@btinternet.com](mailto:lorainestevens@btinternet.com)**



- ... And finally
- The whole committee would like to wish you a very Merry Christmas and a warm, sunny 2011 packed with bees and honey!

